

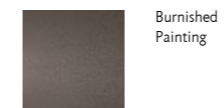


ALVEA

design Marco Lavit

Triangular console table with a load-bearing structure made of 8 mm thick steel sheet painted in a burnished colour with epoxy powders. The side panels are 20 mm thick MDF veneered in oak essence, with a top consisting of interlocking 20x20 mm elements, enclosed by a perimeter frame of solid oak measuring 50x20 mm. The wooden parts are available in a natural oak or charcoal dyed oak finish. Floor support is provided by thermoplastic supports.

Supporting Structure and Feet



Burnished
Painting

Structure

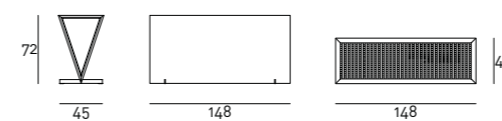


Natural Oak



Charcoal-dyed
Oak

Technical Drawings



Notes

For the charcoal-stained oak version, the steel sheet load-bearing structure, only on the internal part, matches the oak structure's finish.

