



## HALFSQUARE

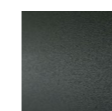
design Giacomo Moor

Bedside tables and cabinets consisting of a series of bases, tops and open compartments made of 3 mm thick steel sheet and steel profiles with 20x20 mm triangular section, lacquered with epoxy powder coating burnished or gunmetal grey colour; for the base only is provided a MDF plinth lacquered in matt black RAL 9017.

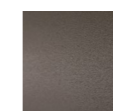
Drawers, single or double height, in MDF veneered in Canaletto walnut or Striped Grey, with side panels in matt charcoal black finishing coupled with Blum® runners, bottom and back in MDF lacquered matt black RAL 9017. All elements are fixed to each other by means of bushes and screws. Floor support secured by adjustable black PVC feet.

---

### Structure



Gunmetal Grey  
Lacquering



Burnished  
Painting

---

### Frontal and Lateral External Parts



Striped Grey



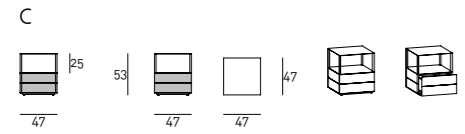
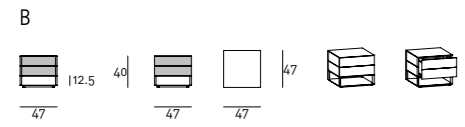
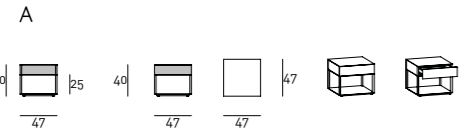
Canaletto  
Walnut

---

### Notes

Striped Grey: it is a decorative multilaminar wood veneer, always finished with a transparent acrylic painting, which features exclusive patterns reproducing the natural characteristics of wood. We would like to remind you that, being a natural and living wooden material, it may present nonhomogeneous colour shades, which are peculiarities of the material itself.

Technical Drawings  
Bedside table



Cabinet

