



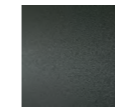
TONBO

design Junpei & Iori Tamaki

Coat-hanger, available in two heights, composed of a base carved from a single block of black Marquina, white Carrara or red Levanto marble with satin finish and opaque transparent protective varnish. Frame composed of two tubular steel $\varnothing 20\text{mm}$ elements, joined together by means of screw, lacquered with epoxy powder coating

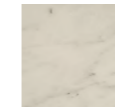
gunmetal grey, fixed to the base by a pierced sheet. Hangers consisting of a $\varnothing 12\text{mm}$ galvanized steel rod and $\varnothing 35\text{mm}$ steel ring lacquered with epoxy powder coating gunmetal grey colour, finished with a slip proof transparent matt varnish, connected together by a "band" of sewn black leather.

Structure

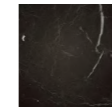


Steel with
Gunmetal Grey
Coating

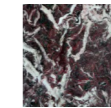
Base



White Carrara
Marble

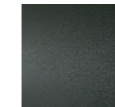


Black Marquina
Marble



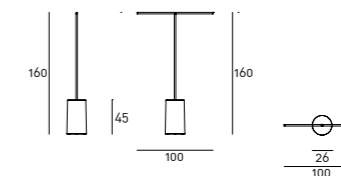
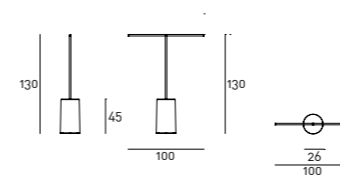
Red Levanto
Marble

Hanger



Steel with
Gunmetal Grey
Coating

Technical Drawings



Hanger

