



OOLONG

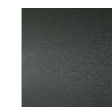
design Piero Lissoni

Swivel armchair with steel frame embedded in cold-expanded polyurethane foam with differentiated densities polyurethane foam insert. Covering in 100% polyether thermally bonded onto a polyamide velveteen backing and needle punched, resinated, non-woven polyester fibre, paired with a polyamide velveteen backing. Base in 20mm thick sheet steel, CNC machined, and Ø50mm drawn tube with inserted swivel return mechanism, with epoxy powder coating burnished colour or gunmetal grey.

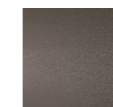
Floor support secured by PVC supports with interchangeable feet (black PVC or felt) depending on the floor.

Fabric or leather upholstery attached with clip profile and fully removable by invisible zippers and Velcro straps. Seat depth 48 cm.

Base

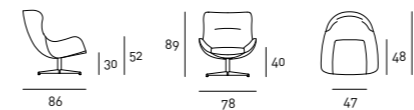


Steel with
Gunmetal Grey
Coating



Burnished
Painted Steel

Technical Drawings



Notes

This product can only be upholstered with the following fabrics/leathers in the collection; any velvet is not suitable as a covering.

- 1a Amelia
- 2a Morris
- 3 Magnolia
- 4 Khali
- 6 River
- 7a Lampedusa
- 10a Mira
- 11 Lyon
- 14 Mikado
- 15a Fashion 17/19
- 15a Fashion 23/15
- 16a Mirage
- 17 Panama
- 18 Fes
- 18 Tan Tan
- 19 Anversa
- 19a Alabama
- 20 Tosca
- 22 Fiore 1524
- 22 Rombo Rilievo 1524
- 22 Sabbia 15
- 22 Sabbia 107
- 26 Divina 3
- 33 Leather Nabuk
- 34a Leather Florence
- 35 Leather New Scotland
- 36 Leather Caresse
- 38a Leather Seta
- 39 Leather Must
- 42 Leather Natural
- 44a Leather Cuoietto
- 45 Leather Mandorlo
- 46 Leather Teak

