

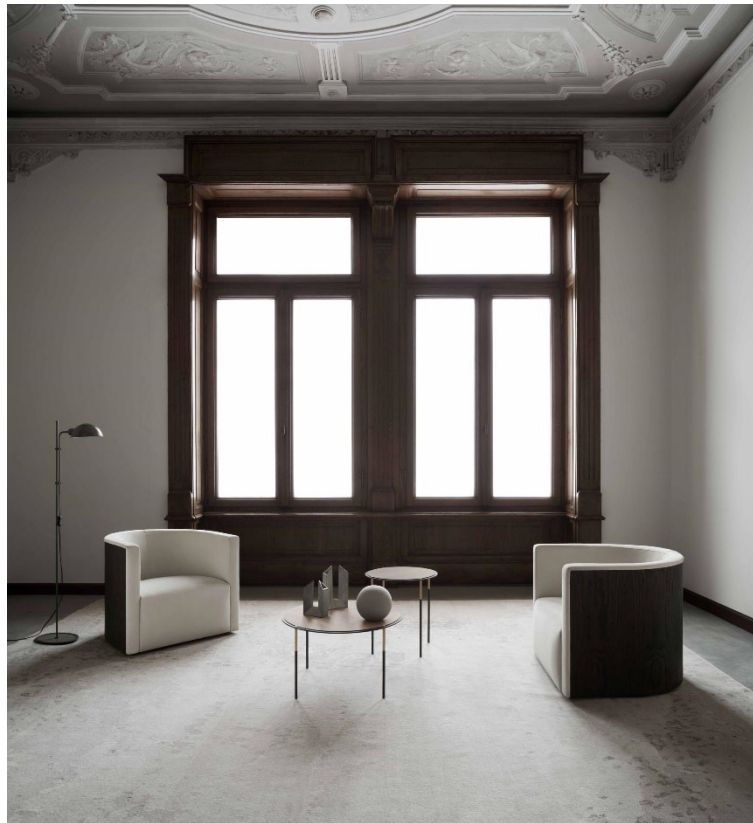
[Se non leggi correttamente questo messaggio, clicca qui](#)

LIVING

D I V A N I

Living Divani shows new proposals through original shots

Living Divani presents its novelties in the fabulous atmosphere of a historical house on the Garda Lake. Shadows of modern objects disappear and are outlined into chiaroscuro plays, enhancing the shots of the **2023 collection**.



Among the new complements featuring is the **Alvea** console portrayed together with the **Paradigma** mirror. Both *Marco Lavi*'s creation they play to reflect the light into geometrical, squared and strict shapes.

The first one shows itself as a triangle that sublimates woodworking, exalting the emptiness of the structure. The mirror, inspired by the Vitruvian grid, accommodates four guiding axes along which different wooden accessories can be inserted to choose, through their position, the ideal asymmetries for the own object.

Two **Clan** Sofa by *Piero Lissoni*, facing each other, interact as family members gathered in the living room in a joyful Sunday.



The squared and welldefined silhouettes of **Ark** armchair by *David Lopez Quincoces* outline the **Metro²** sofa of *Piero Lissoni*; to complete the setting **Menhir** and **Era** rest on **Sin Titolo 28** carpet.

The protagonists of this shooting appear sumptuous in their utmost simplicity, thus telling the essential elegance of the brand revealed gradually.



The bedroom area is furnished with the **Sumo Bed** by *Piero Lissoni*, conceived with a headboard able to satisfy the needs of body and mind. As an extension, the homonymous bench, available in different sizes, is the ideal complement to give continuity and support to the night environment.



Living Divani silently tells itself through its products that, photographed, define the distinctive features of an authentic brand.