



KIGI

design Junpei & Iori Tamaki

Freestanding complementary furniture consisting of a hanger element in aluminium tube Ø30mm covered in wood essence, to which is attached a curved solid wood element, which acts as hook for hanging bags and jackets; empty-pockets tray Ø190mm in solid wood, screwed by steel plate to a Ø16mm steel tube.

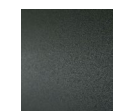
Both elements are fixed by means of tie-rods to a steel sheet base Ø390mm.

Floor support secured by black plastic feet.

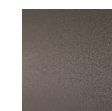
Wooden element finish: oak, natural or charcoal-dyed acrylic paint.

Metal parts finish: epoxy powder coating in gunmetal grey or burnished color.

Base



Steel with
Gunmetal Grey
Coating

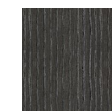


Burnished
Painted Steel

Structure



Natural Oak



Charcoal-dyed
Oak

Technical Drawings

