



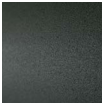
ECHOO

design Piero Lissoni

Sofa and armchair with structure in double-panelled poplar, fir-wood and plywood, steel seat-chassis, with epoxy powder coating, sprung with coated rubber elastic straps, and padding in polyurethane foam covered in 100% polyether thermally bonded onto a polyamide velveteen backing. Seat cushion in differentiated density polyurethane foam covered in needle punched, resinated, non-woven polyester fibre, bonded onto a polyamide velveteen backing. Backrest and armrest cushion in differentiated density polyurethane foam covered with a mat in prewashed and sterilized goose down, stitched into separate compartments.

Steel feet Ø15 mm, gunmetal grey or burnish colour painted, screwed to the seat-chassis with a bushing and with adjustable black plastic tips. Fabric or leather upholstery, both fully removable by zippers and Velcro fastenings.  
Seat depth: Armchair 64 cm;  
Sofa 69 cm.

Feet

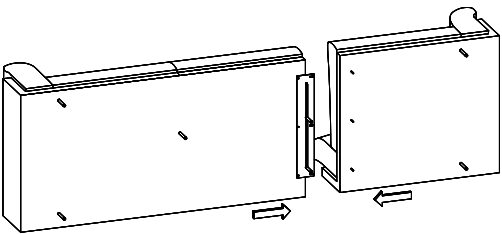


Verniciatura  
Grigio Canna  
di Fucile

Notes

For dimensions 307 / 322 cm, on request the sofa can be supplied in two parts (always as shown in the drawing above), with even upholstery in two parts.

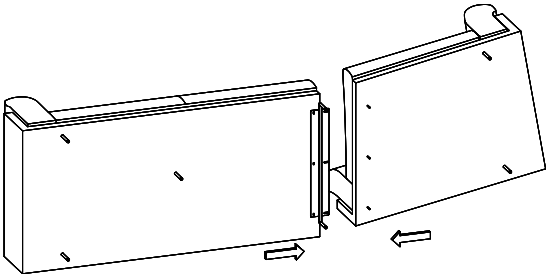
Sofa 307 cm



This solution is for delivery purposes only. The model is not available as modular.

According to the product shape, some coverings cannot be used: please refer to the adaptability sheet in the "Materials" section of the website.

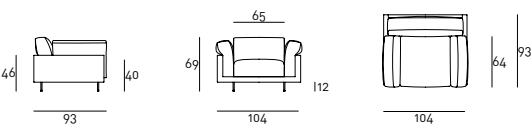
Sofa 322 cm



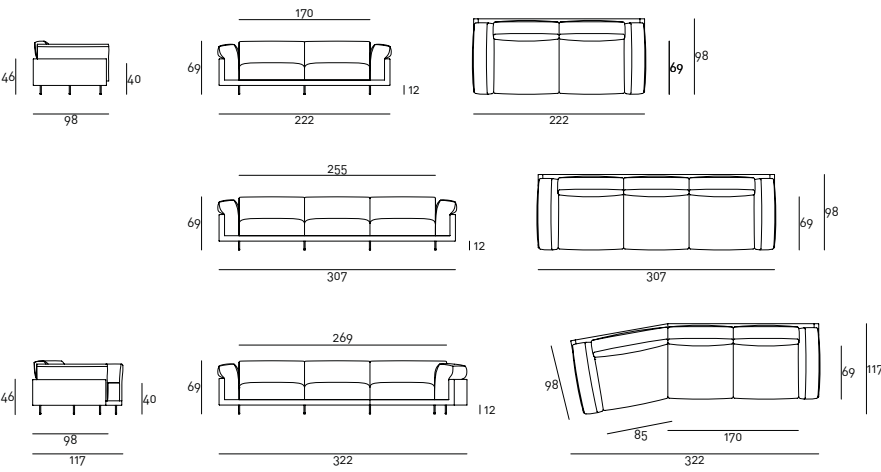
For leather coverings the "Leather A" or "Leather B" Maintenance Kit is included with the product.



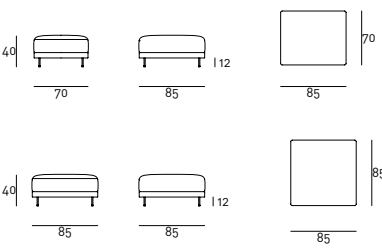
Technical Drawings  
Armchair



Sofa



Pouf



Loose Cushion

