

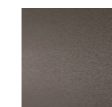


METRO TABLE

design Piero Lissoni

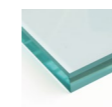
Low table with rectangular section steel base with finishing in burnished epoxy powder coating and floor support secured by black PVC tips. Top in tempered glass, available versions: clear glass, black back-painted glass, smoked glass or white back-painted extra-clear glass.

Base

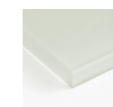


Burnished
Painted Steel

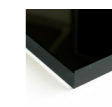
Top



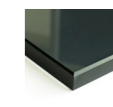
Transparent
Glass



White Painted
Glass



Black Painted
Glass



Smoked Grey
Glass

Technical Drawings

