

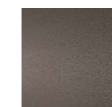


METRO TABLE

design Piero Lissoni

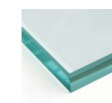
Coffee table with a base made of rectangular section tubular steel, painted in a burnished colour with epoxy powders, and floor support provided by black plastic caps. The tabletop is made of tempered glass and is available in two versions: transparent or smoked.

Bracket

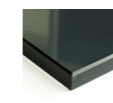


Burnished
Painting

Top



Transparent
Glass



Smoked
Glass

Technical Drawings

