



LIPP BED

design Piero Lissoni

Bed with headboard structure in multilayer poplar and double paneled fir-wood with padding in polyurethane foam and acrylic fiber layers, covered in 100% polyether thermally bonded onto a polyamide velveteen backing and covering in needle punched, resinated, nonwoven polyester fibre, bonded onto a polyamide velveteen backing. Headrest, inset in the headboard structure, in multilayer padded in differentiated density polyurethane foam with "capitoné" detail and **non-removable** leather or fabric upholstery. Bedstead chassis, in 70x20mm tubular steel with black epoxy powder coating, made of two separate parts connected by plates and secured with screws. Bedstead structure, screwed on the chassis, in multilayer padded in polyurethane foam and covering in needle punched, resinated, nonwoven polyester fibre, bonded onto a polyamide velveteen backing. Feet, inset in specific bushing welded to the bedstead chassis then secured with screws, in drawn-steel square section 15x15mm with burnished epoxy powder coating and adjustable black plastic tips.

Slat base support in glass-filled ABS adjustable in height. Headboard and bedstead structure with fabric or leather upholstery, both fully removable by Velcro fastening. All perimeter stitching are enhanced with edgings in Grosgrain for the fabric version, and braided leather trim, in the same finish, for the leather one.

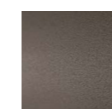
Fabric cover to protect the slat base, in 100% cotton col. Ecrú, fixed to the slat with Velcro fastening (available only for slat base in the price list and supplied by the Company).

Also available in American standard Queen and King size.

Predisposition for placing slat base, foreseen dimensions:

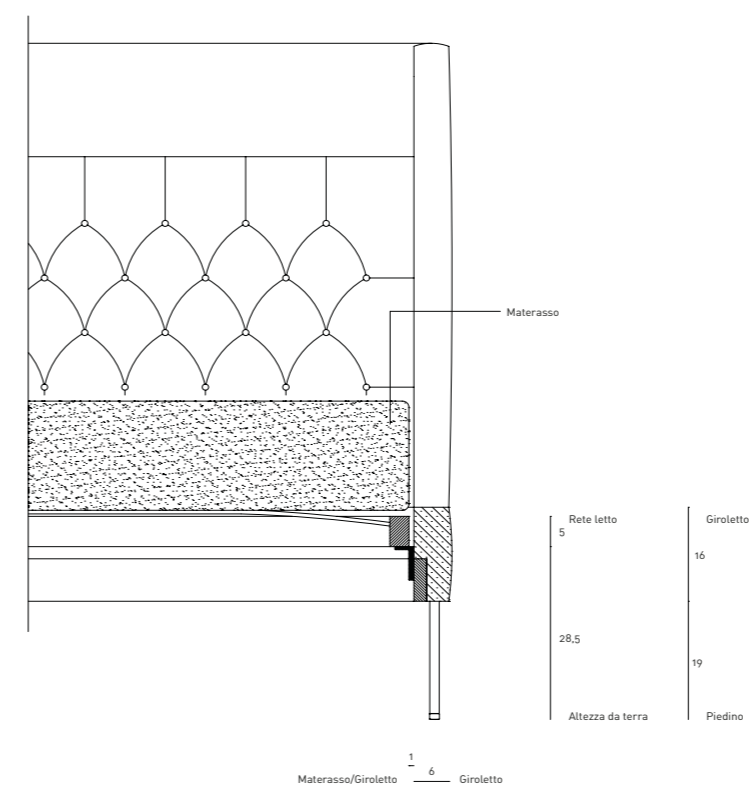
- cm.140x200
- cm.160x200 or n°2 80x200
- cm.180x200 or n°2 90x200
- cm.200x200 or n°2 100x200
- cm.153x203 Queen size
- cm.193x203 King size

Feet

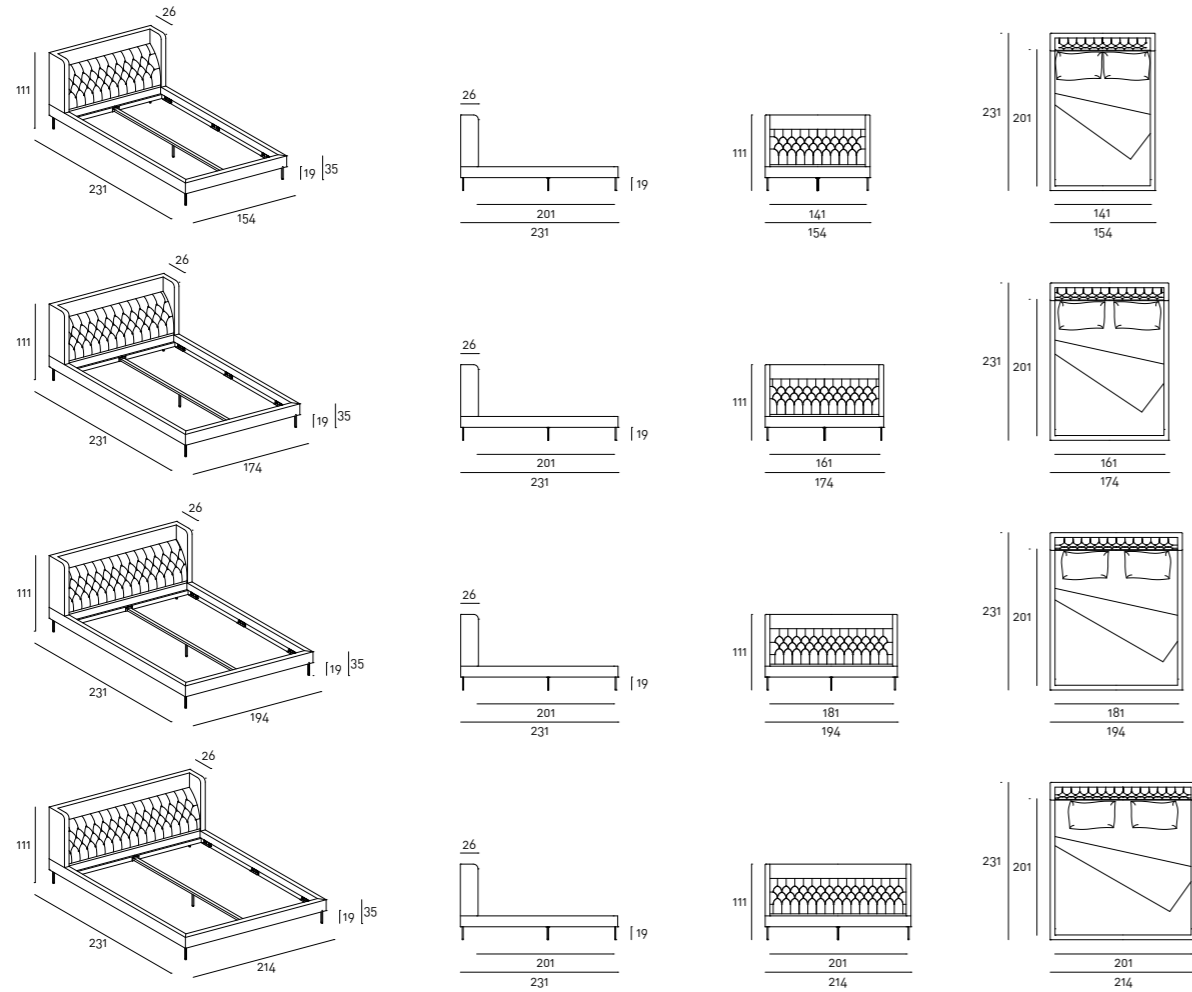


Burnished
Painting

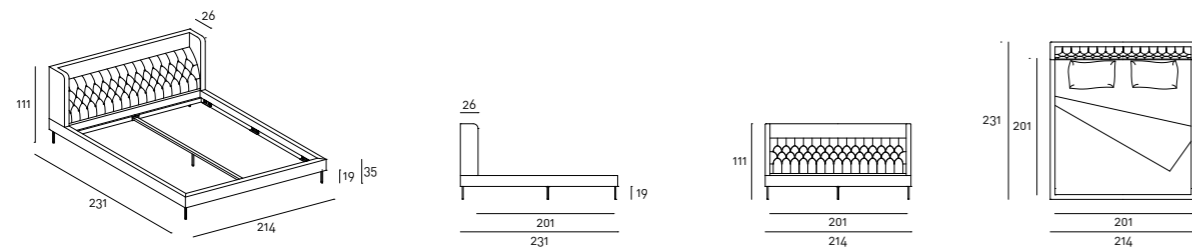
Bed Section



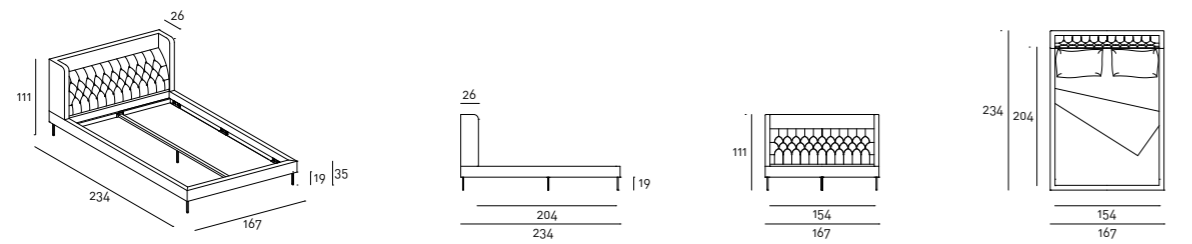
Technical Drawings



Queen Size 153×203



King Size 193×203



Notes

For slatted bases and mattresses not supplied by the company, please forward the technical specifications.

For slatted bases and mattresses, please refer to the price list.

The detail Capitoné cannot be done with leather Cuoietto.

According to the product shape, some coverings cannot be used: please refer to the adaptability sheet in the "Materials" section of the website.

For leather coverings the "Leather A" or "Leather B" Maintenance Kit is included with the product.

