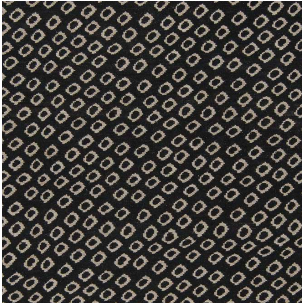


KUMO COLLECTION - MISORE

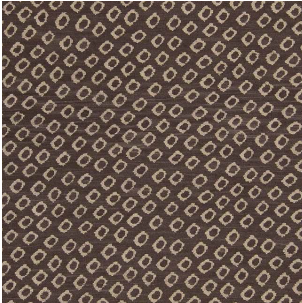
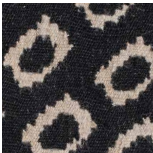
design Mist-o

Hand-spun carded 100% fine wool.
Quality: hand-woven, kilim technique with fissure.
Made in Pakistan.
Available in 3 color versions.
Dimensions: 220x280cm; 300x400cm.
Available also with customized sizes.

Variants



Black&White



Negativo Sepia



Steel

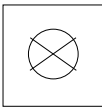


Notes

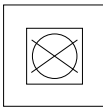
Due to the manufacturing process, consider some possible size adjustment on the indicated standard dimension.
Considering the unique characteristic of the hand manufacturing and production place, delivery time is 3 months from order confirmation.
Images are purely indicative

Care Instruction

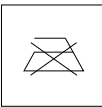
Vacuum regularly or sweep with a soft brush. Complete washing in specialized centers only.
Do not dry clean.



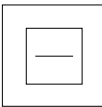
Do not
dry clean



Do not
tumble dry



Do not
iron



Dry
flat