



KUMO COLLECTION - KIRISAME

design Mist-o

Hand- spun carded 70% fine wool and 30 % artificial silk.

Quality : hand-woven with kilim and soumak technique.

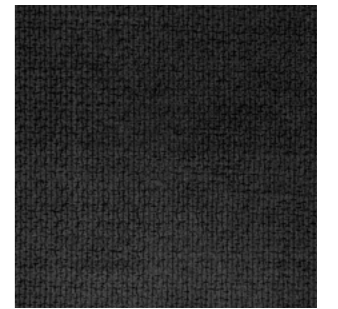
Made in Pakistan.

Available in 4 color versions.

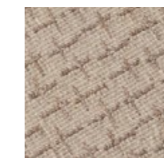
Dimensions: 220x280cm; 300x400cm.

Available also with customized sizes.

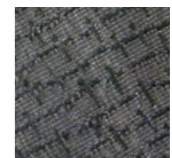
Variants



Charcoal Cream



Negativo Sepia



Charcoal Black

Notes

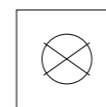
Due to the manufacturing process, consider some possible size adjustment on the indicated standard dimension.

Considering the unique characteristic of the hand manufacturing and production place, delivery time is 3 months from order confirmation.

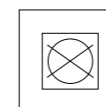
Images are purely indicative

Care Instruction

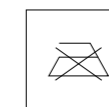
Vacuum regularly or sweep with a soft brush. Complete washing in specialized centers only. Do not dry clean.



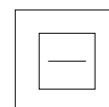
Do not dry clean



Do not tumble dry



Do not iron



Dry flat