



DUMAS - DUMAS XL

design Piero Lissoni

Armchairs and sofas with backrest frame in double-paneled fir-wood; armrest and seat frame in multilayer poplar wood, padded in polyurethane foam coated with a covering in needle punched, resinated, non-woven polyester fiber, bonded onto a polyamide velveteen backing.

For sofas only, on the front part of the seat frame is secured an aluminum extrusion thickness 3 mm shaped per specific design, covered in 100% polyether thermally bonded onto a polyamide velveteen backing. Seat chassis, inserted into the base, in fir-wood for the armchairs and in 40x30 mm tubular steel with epoxy powder coating for sofas; both are sprung with coated rubber elastic straps and with padding in polyurethane foam covered in 100% polyether thermally bonded onto a polyamide velveteen backing. Seat cushions in prewashed and sterilized goose down, stitched into separate compartments, with a differentiated density polyurethane foam and Visco-soft insert; covering in needle punched, resinated, non-woven polyester fiber, bonded onto a polyamide velveteen backing.

Backrest cushion in prewashed and sterilized goose down, stitched into separate compartments, with polyurethane foam insert. Loose cushions in prewashed and sterilized goose down, stitched into separate compartments.

Tubular steel feet Ø30 mm for sofas and armchair and Ø22 mm for easy chair, joined by a bracket, with burnish epoxy powder coating with black PVC tips; or feet in solid wood veneered Stone Oak®, with acrylic water-based finish, footprint 50x50 mm section for sofas and armchair, and 40x40 mm for easy chair, screwed to a tubular steel bracket with matt black epoxy powder coating.

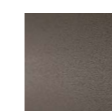
Fabric or leather upholstery; the fabric version only is fully removable by zippers and Velcro fastenings.

Seat Depth: Easy chair 50 cm;

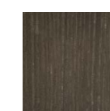
Armchair 61 cm;

Sofa 72 - 92 cm.

Feet



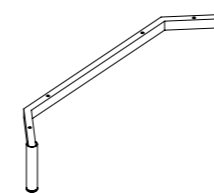
Burnished
Painting



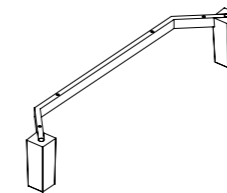
Stone Oak®

Notes

Tubular steel feet.

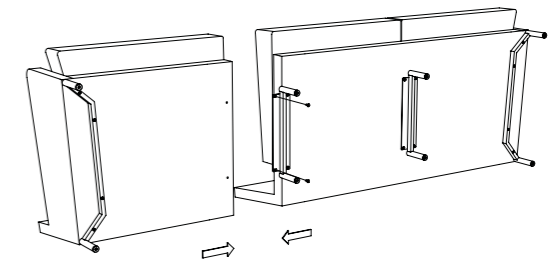


Solid wood feet

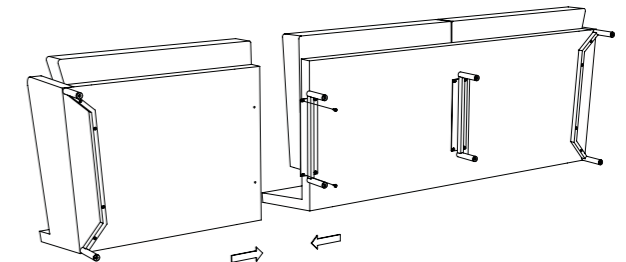


For dimensions cm. 282/327, in both depth 102/122cm, on request the sofa can be supplied in two parts (always as shown in the drawing below).

Sofa 282cm



Sofa 327cm



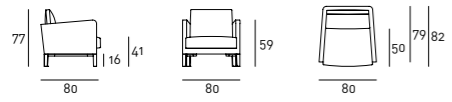
Stone Oak®: this wood owes its particular coloring to an entirely natural process. Because of this, some slabs may look more brown than others. Our commitment is to provide you a high-quality product: any differences in color should not be considered as defects. For further information about this wood, please refer to the technical sheet available in the "Materials" section on our website.

According to the product shape, some coverings cannot be used: please refer to the adaptability sheet in the "Materials" section of the website.

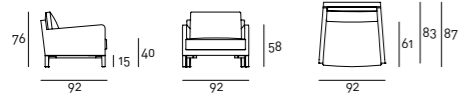
For leather coverings the "Leather A" or "Leather B" Maintenance Kit is included with the product.

Technical Drawings

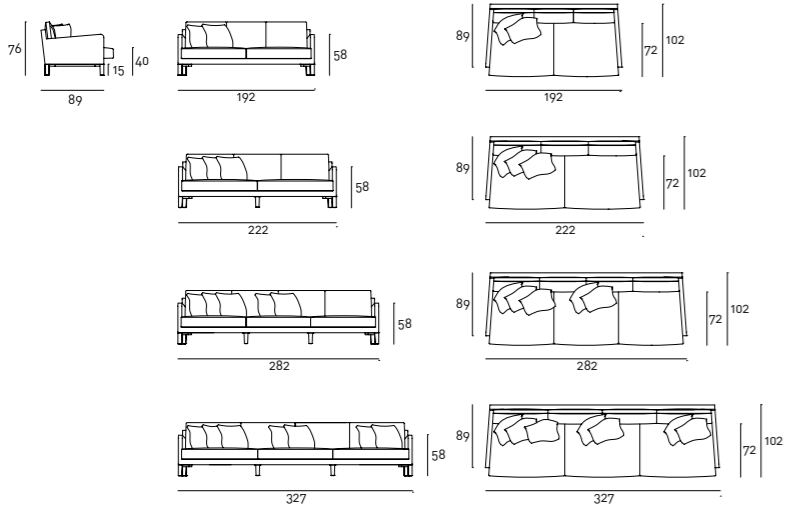
Easychair



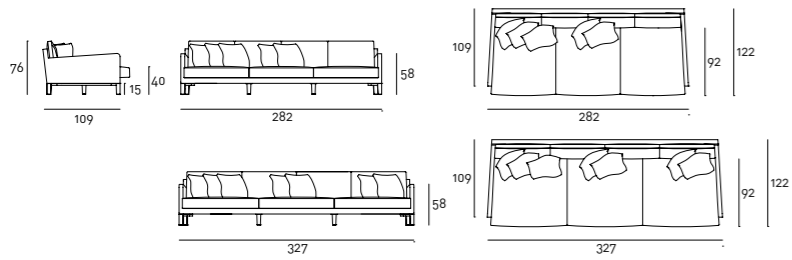
Armchair



Sofa



Dumas XL
Sofa



Loose Cushion



