



SARTOR.C

design Piero Lissoni

Armchair with supporting frame in tubular steel coated with black epoxy powder.

Seat chassis in multilayer birch wood, sprung with cross-woven, coated rubber elastic straps and covering in 100% polyether thermally bonded onto a polyamide velveteen backing.

Backrest and armrest frames made with a structural elastic material with PVC80SH supports and core in fiberglass and steel. Thanks to its flexibility feature, it allows a slight bending of the backrest and armrests to provide maximum comfort.

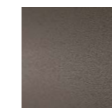
Seat cushion in prewashed and sterilized goose down, stitched into separate compartments, with a differentiated density polyurethane foam insert. Backrest cushion in polyurethane shaped foam covered with acrylic fiber layers, secured to buttons at sight in the rear of the backrest, through a black leather Scooby profile.

Feet in steel tube Ø25 mm with burnished epoxy powder coating with swivelling tip in black plastic.

Covering available in fabric or leather, fully removable by zippers and Velcro fastenings.

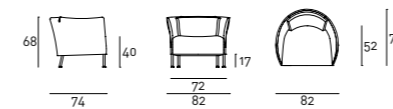
Seat depth 52 cm.

Feet



Burnished
Painting

Technical Drawings



Loose Cushion



Notes

According to the product shape, some coverings cannot be used; please refer to the adaptability sheet in the "Materials" section of the website.

For leather coverings the "Leather A" or "Leather B" Maintenance Kit is included with the product.

