



MINI CAFÈ | INDOOR - OUTDOOR

design Piero Lissoni

Armchair available for indoor and outdoor.

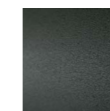
Indoor version: tubular steel frame with chromed finish or with epoxy powder coating gunmetal grey color. Seat panel in self-supporting decorative HPL plastic laminate. Woven with hide or PVC profile in the colors in collection. Seat cushion in preformed differentiated density polyurethane foam, covered with acrylic fibre layers. Backrest cushion in prewashed and sterilized goose down, stitched into separate compartments. For the Light version, backrest cushion, always in polyurethane foam coated with acrylic fibre layers. Fabric or leather upholstery, both fully removable by zippers. Seat and backrest cushion's upholstery are joined together by sewing.

Outdoor version: tubular steel frame in AISI 316 Stainless Steel with matt satin-finish. Seat panel in self-supporting decorative HPL plastic laminate. Woven in PVC profile in the colours in collection. Seat and backrest cushions padded with open cell structure polyurethane foam covered with draining fabric. Upholstery with outdoor fabrics only, fully removable by zippers. Seat and backrest cushion's upholstery are joined together by sewing. Seat depth 37 cm.

Structure



Cromatura
Lucida
(Indoor)

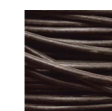


Verniciatura
Grigio Cannai
di Fucile
(Indoor)



Inox Satinato
Opaco
(Outdoor)

Weaving



Cordone Cuoio
col. Marrone
(Indoor)



Cordone Cuoio
col. Nero
(Indoor)



Cordone Cuoio
col. Naturale
(Indoor)



PVC Satinato
Cuoio Naturale
(In-Outdoor)



PVC Satinato
Rosso
(In-Outdoor)



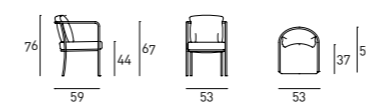
PVC Satinato
Nero
(In-Outdoor)



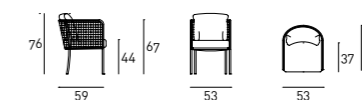
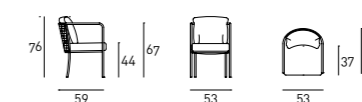
PVC Satinato
Bianco
(In-Outdoor)

Technical Drawings

Light



Woven



Notes

According to the product shape, some coverings cannot be used: please refer to the adaptability sheet in the "Materials" section of the website.

For leather coverings the "Leather A" or "Leather B" Maintenance Kit is included with the product.

For the Outdoor version, especially after prolonged rainy or humidity periods, it is suggested to rotate the elements and/or to temporarily lift the seat/back/armrest cushions to allow a complete drying and to avoid accumulation of dirt and moisture, causing the formation of mold.

It is recommended to use a "Protective Cover" to improve the longevity of the product; please note that the protective cover is made of water vapor repellent fabric, perfect to prevent and protect from the formation of mold, easily washable with water and soap. Do not keep the fabric folded for a long time when it is wet. For further information about the dedicated maintenance, please refer to the technical sheet available in the "Materials" section on our website. Lastly, we recommend placing the product on terraces or verandas to guarantee its durability over the years.

