



MINI TOMBOLO | INDOOR - OUTDOOR

design Piero Lissoni - ready made by Studio UN pizza

Armchair available for indoor and outdoor.

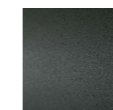
Indoor version: frame in tubular steel with chromed finish or with epoxy powder coating gunmetal grey color or in AISI 316 Stainless Steel matt satin-finish. Seat panel in self-supporting decorative HPL plastic laminate padded in polyurethane foam. Seat cushion in differentiated density polyurethane foam, covered with acrylic fibre layers. Backrest cushion in preformed polyurethane foam covered with acrylic fibre layers. Fabric or leather upholstery, both fully removable by zippers.

Outdoor version: tubular steel frame in AISI 316 Stainless Steel with matt satin-finish or AISI 316 Stainless Steel with epoxy powder coating gunmetal grey colour. Seat panel in self-supporting decorative HPL plastic laminate. Seat and backrest cushions padded with open-cell structure polyurethane foam and with draining fabric covering. Upholstery with outdoor fabrics only, fully removable by zippers. Both version woven with a hypoallergenic, recyclable, eco-friendly tubular, suitable both for indoor and outdoor, in colours in collection. Seat depth 38 cm.

Structure



Chromed-Plated
Finish
(Indoor)

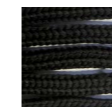


Gunmetal Grey
Lacquering
(In-Outdoor)



Stainless Steel
with Matt
Satin Finish
(In-Outdoor)

Weaving



Tubular
col. Black
(In-Outdoor)

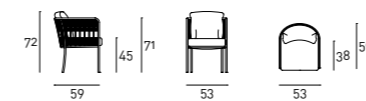


Tubular
col. Green
(In-Outdoor)



Tubular
col. Greige
(In-Outdoor)

Technical Drawings



Notes

According to the product shape, some coverings cannot be used; please refer to the adaptability sheet in the "Materials" section of the website.

For leather coverings the "Leather A" or "Leather B" Maintenance Kit is included with the product.

For the Outdoor version, especially after prolonged rainy or humidity periods, it is suggested to rotate the elements and/or to temporarily lift the seat/back/armrest cushions to allow a complete drying and to avoid accumulation of dirt and moisture, causing the formation of mold.

It is recommended to use a "Protective Cover" to improve the longevity of the product; please note that the protective cover is made of water vapor repellent fabric, perfect to prevent and protect from the formation of mold, easily washable with water and soap. Do not keep the fabric folded for a long time when it is wet. For further information about the dedicated maintenance, please refer to the technical sheet available in the "Materials" section on our website. Lastly, we recommend placing the product on terraces or verandas to guarantee its durability over the years.

