



Ceci N'est Pas Un Baroque

Design Harry&Camila

Tappeto 70% lana filata e cardata a mano e 30% seta naturale, qualità annodato a mano 100 nodi/pollice.

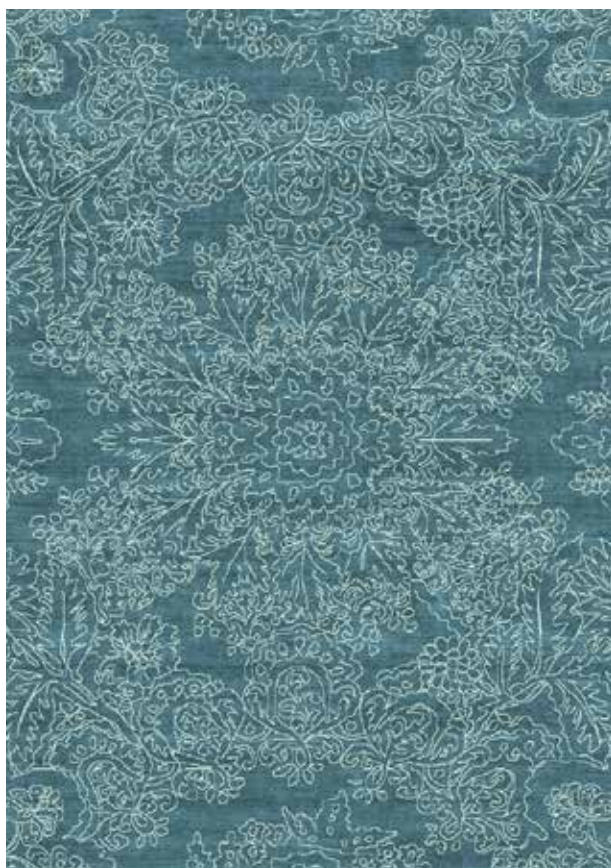
Made in Nepal.

Disponibile in tre varianti colore.

Dimensioni: 220x280cm.



.1



.2



Stone washed

Ceci N'est Pas Un Baroque

Design Harry&Camila



.3