



RIVULET | INDOOR - OUTDOOR

design Junpei & Iori Tamaki

Chair available for indoor and outdoor.

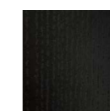
Indoor version: in solid ash wood Ø30 mm with acrylic painting finish natural colour and with acrylic water-based finish, or charcoal-dyed, with acrylic base and acrylic painting finish or in tubular steel Ø22 mm lacquered with epoxy powder coating gunmetal grey colour. Seat chassis in multilayer sprung with coated rubber elastic straps, padded in polyurethane foam covered with acrylic fibre layers.

Outdoor version: with tubular frame Ø22 mm in Stainless Steel AISI 316 lacquered with epoxy powder coating gunmetal grey colour; seat chassis in plywood for outdoor use, sprung with coated rubber elastic straps, padded with open-cell structure polyurethane foam covered with outdoor fiber and draining fabric covering. Decorative weave for backrest and armrests with profile in hide, cellulose cord (both indoor use only) or waxed rope (indoor/outdoor use), in the colours of collection. Non-removable seat upholstery in fabric or leather; for the outdoor version, in outdoor fabrics only. Floor support secured by black plastic feet.

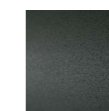
Structure



Natural Ash (Indoor)



Charcoal-dyed Ash (Indoor)



Gunmetal Grey Lacquering (In-Outdoor)

Weaving



Hide Profile col. Natural (Indoor)



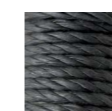
Hide Profile col. Black (Indoor)



Hide Profile col. Cognac (Indoor)



Cellulose Rope Profile col. Natural (Indoor)



Cellulose Rope Profile col. Black (Indoor)



Waxed Rope Profile col. Orange (In-Outdoor)



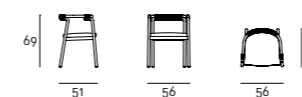
Waxed Rope Profile col. Grey (In-Outdoor)



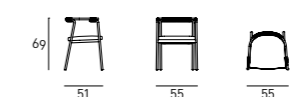
Waxed Rope Profile col. Black (In-Outdoor)

Technical Drawings

Indoor



Indoor/ Outdoor



Notes

Wood is a living material; therefore, it can have slight color and dimension changes. The presence of any non-homogeneous color shades is not to be considered a defect but a quality.

According to the product shape, some coverings cannot be used; please refer to the adaptability sheet in the "Materials" section of the website.

For leather coverings the "Leather A" or "Leather B" Maintenance Kit is included with the product.

For the OUTDOOR version, it is recommended to use a "Protective Cover" to improve the longevity of products; please note that the protective cover is made of a water vapor repellent fabric, perfect to prevent and protect from the formation of mold, easily washable with water and soap. Do not keep the fabric folded for a long time when it is wet. For further information about the dedicated maintenance, please refer to the technical sheet available in the "Materials" section on our website. Lastly, we recommend placing the product on terraces or verandas to guarantee its durability over the years.

Rivulet chair with structure in natural ash
and woven in hide profile col. black





—
Rivulet chair, outdoor version, woven in waxed
rope profile col. black

