



TETHYS

design Oscar & Gabriele Buratti

Table with central open compartment, composed of a MDF ring-top, Ø128cm outer and Ø49cm inside, 25mm thick available veneered or polished, and a base - with a central compartment - in "sandwich" of multilayer and MDF always lacquered matt black.

Veneered version: top veneered, on the top part only, in charcoal-dyed oak or Stone Oak®, with acrylic painting finish; edge and bottom always lacquered matt black.

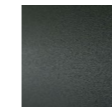
Polished version: top and edge lacquered in glossy RAL-K7 3005 "Red Wine" with bottom always lacquered matt black.

All top versions are fixed to the base by tie rods.

"C" shaped side tables, in sizes Ø39 h48cm or Ø49 h40cm, available with top in marble, wood or with a supporting tray, consisting of a

laser-cut steel sheet base and under-top in pre-moulded steel sheet, joined by a Ø30mm steel and welded together and finished with epoxy powder coating gunmetal grey. Top in marble, 15mm thick (10mm thickness at sight), available in white Carrara, black Marquinia, red Levanto or Sahara Noir with satin finish and opaque transparent protective varnish or glossy or opaque polyester finish. Top available also in HPL 8mm thick, veneered in charcoal-dyed oak or Stone Oak® with acrylic painting finish. Supporting tray Ø39cm h4,5cm or Ø49cm h4,5cm in moulded aluminum, 2mm thick, lacquered with epoxy powder coating gunmetal grey with PVC spacers. The Ø49cm tray can also be used as a closing element for the central compartment of the Ø128cm table.

"C" Shaped Table Structure



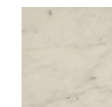
Steel with
Gunmetal
Grey Coating

Ø128 Table Base

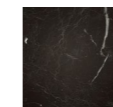


Lacquered
Matt Black

"C" Shaped Table Top



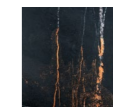
White Carrara
Marble



Black Marquinia
Marble



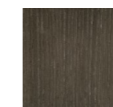
Red Levanto
Marble



Sahara Noir
Marble



Charcoal-dyed
Oak

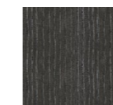


Stone Oak®

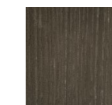
Ø128 Table Top



Lacquered
Glossy
RAL-K7 3005
Red Wine

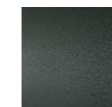


Charcoal-dyed
Oak



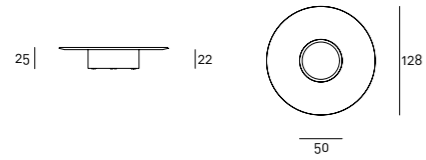
Stone Oak®

Tray



Aluminum with
Gunmetal Grey
Coating

Technical Drawings



"C" Shaped Side Table
With Tray



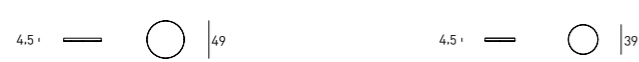
With Top in Marble



With Top in Wood



Tray



Notes

Stone Oak®: this wood owes its particular coloring to an entirely natural process. Because of this, some slabs may look more brown than others. Our commitment is to provide you a high quality product; any differences in color should not be considered as defects.

On request, an additional protective (acrylic solvent) painting is available for the Stone Oak® finishing only. It should be noted that this additional coating slightly changes the natural color and texture of the surface. Although this supplementary painting increases the surface resistance,

it is still a natural material; therefore small superficial stains, due to oil or other substances, have to be promptly removed, before being absorbed in depth by the wood. Thus, we recommend regular care and maintenance.

For the marble top version please specify the required finish in the order.