



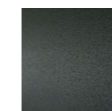
KIWI

design Keiji Takeuchi

Coffee tables, in sizes Ø39 h45 or Ø43 h35, available with top 20mm thick in MDF lacquered matt black or veneered, on the top part only, in charcoal-dyed oak or Stone Oak®, with water-based acrylic painting finish; edge and bottom always lacquered matt black. The top is available also in countered marble, 15mm thick, coupled to a 2mm thick steel sheet plate finish with epoxy powder coating gunmetal grey colour. The marble tops are: white Carrara, black

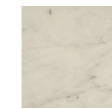
Marquinia, red Levanto or Sahara Noir with satin finish and opaque transparent protective varnish or with glossy or opaque polyester finish. Base consisting of two Ø16mm curved steel tubulars, coupled with turned steel tips, then welded together; all top versions are finished with epoxy powder coating gunmetal grey colour, screwed to the base by 3mm thick steel plate. Floor support secured by black PVC feet.

Base

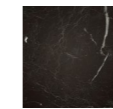


Steel with
Gunmetal Grey
Coating

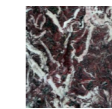
Top



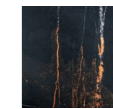
White Carrara
Marble



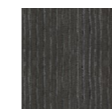
Black Marquinia
Marble



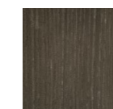
Red Levanto
Marble



Sahara Noir
Marble



Charcoal-dyed
Oak

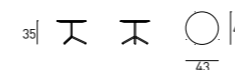


Stone Oak®



Lacquered
Matt Black

Technical Drawings



Notes

Stone Oak®: this wood owes its particular coloring to an entirely natural process. Because of this, some slabs may look more brown than others. Our commitment is to provide you a high quality product; any differences in color should not be considered as defects.

On request, an additional protective (acrylic solvent) painting is available for the Stone Oak® finishing only. It should be noted that this additional coating slightly changes the natural color and texture of the surface. Although this supplementary painting increases the surface resistance, it is still a natural material; therefore small superficial stains, due to oil or other substances, have to be promptly removed, before being absorbed in depth by the wood. Thus, we recommend regular care and maintenance.