



## FLOYD TABLE

design Piero Lissoni

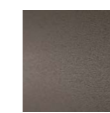
Low tables in different sizes (53x40cm, 60x40 cm and 56x56 cm) h. 42 cm with MDF shaped and beveled top 20 mm thick. The upper part only is charcoal dyed oak or Stone Oak® veneered with acrylic paint finish, edge and bottom always matt black painted; porcelain stoneware shaped top 12 mm thick available in Natural Kaolin or Balance Smoke color shades.  
For the 53x40cm size only a shaped and beveled marble top 15 mm thick paired with a plate support 2 mm thick is provided.

Marble top available in finishes: Forest Green, Carrara White, Marquinia Black, Levanto Red or Sahara Noir with satin finish and matt transparent protective or with polished/matt polyester finish. Structure with two steel sheet laser cut 5 mm thick with central support in steel tube Ø20 mm, painted with gunmetal grey or burnished epoxy powder coating.  
Floor support provided by plastic feet.

### Base



Gunmetal Grey  
Lacquering



Burnished  
Painting

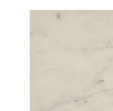
### Top



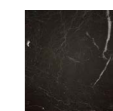
Natural Kaolin  
Porcelain  
Stoneware



Balance Smoke  
Porcelain  
Stoneware



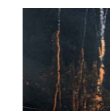
Bianco Carrara  
Marble



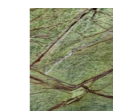
Nero Marquinia  
Marble



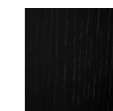
Rosso Levanto  
Marble



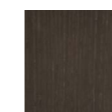
Sahara Noir  
Marble



Forest Green  
Marble

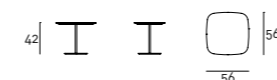
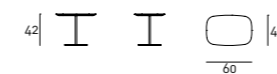
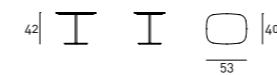


Charcoal-dyed  
Oak



Stone Oak®

### Technical Drawings



### Notes

Wood is a living material; therefore, it can have slight color and dimension changes. The presence of any non-homogeneous color shades is not to be considered a defect but a quality. Please note that the direct sunlight exposure may alter the wood color; therefore, we recommend the periodic position shift of the objects placed on the furniture for the first months to avoid differences in shades between exposed and covered portions.

Stone Oak®: this wood owes its particular coloring to an entirely natural process. Because of this, some slabs may look more brown than others. Our commitment is to provide you a high-quality product; any differences in color should not be considered as defects. For further information about this wood, please refer to the technical sheet available in the "Materials" section on our website.

On request, an additional protective (acrylic solvent) painting is available for the Stone Oak® finishing only. It should be noted that this additional coating slightly changes the natural color and texture of the surface. Although this supplementary painting increases the surface resistance, it is still a natural material; therefore small superficial stains, due to oil or other substances, have to be promptly removed, before being absorbed in depth by the wood. Thus, we recommend regular care and maintenance.

Marble top available only for size 53x40x42cm. Please specify the required finish in the order.

For marble finishing with opaque polyester finish, the "Marble" Maintenance Kit is included with the product.