



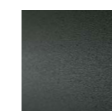
FLOYD-HI TABLE

design Piero Lissoni

Coffee tables in different sizes (92x92 cm, 160x92 cm, 145x145 cm e 160x160 cm) with a height of 30 cm, composed of a 12 mm thick tempered glass top and for the smoked version 10 mm thick, with rounded corners and bevelled edge.

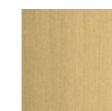
Bracket in laser-cut steel sheet, lacquered with epoxy powder coating gunmetal grey colour with brass under-top plates and brass feet satinized and finished with a transparent matt varnish. The fixing of the top is guaranteed by circular thermoplastic material. Floor support secured by black plastic feet.

Bracket



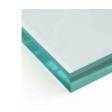
Gunmetal Grey
Lacquering

Disk

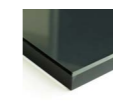


Matt Brass

Top



Transparent
Glass



Smoked Grey
Glass

Technical Drawings

