



VIZIO (INDOOR + OUTDOOR)

design Leonardo Talarico

Furnishing element for indoor and outdoor use with structure consisting of two welded steel rod $\varnothing 10\text{mm}$, base $\varnothing 21\text{cm}$ in laser-cut steel sheet, 8 mm thick, and two round supporting top $\varnothing 12\text{cm}$ and $\varnothing 10\text{cm}$ in lasercut steel sheet th.3mm, welded to the structure. Finish with galvanizing base for outdoor use, and lacquered with epoxy polyester powder coating RAL-K7 9010 white, RAL-K7 9017 black or gunmetal grey colour. "Small Tray" $\varnothing 11\text{cm}$ h4cm available in polyamide strengthened with fiberglass, with finishing in solvent coating RAL-K7 9010 white or RAL-K7 9017 black. Floor support secured by PVC feet also suitable for outdoor use.

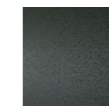
Structure



Painted Steel
RAL-K7 9017
Black
(In-Outdoor)



Painted Steel
RAL-K7 9010
White
(In-Outdoor)

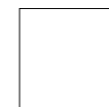


Steel with
Gunmetal Grey
Coating
(In-Outdoor)

Tray

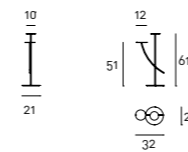


Painted
RAL-K7 9017
Black
(In-Outdoor)



Painted
RAL-K7 9010
White
(In-Outdoor)

Technical Drawings



Tray

$\varnothing 11$
h4

