



## SUMO PANCA

design Piero Lissoni

Bench available in the 195x64 cm size, consisting of a tubular steel supporting structure with a 20x30 mm section, painted with epoxy powders in gunmetal grey and with a bevelled top in 20 mm thick MDF veneered and edged in Canaletto walnut essence and finished with water-based acrylic varnish; bevelling and base always in matt black lacquer. Single steel feet  $\varnothing$ 25 mm h.21 cm, painted with gunmetal grey epoxy

powders. Floor support guaranteed by PVC supports with interchangeable feet (in black PVC or felt) depending on the floor. Cushions with central stitched stitching available, in the dimensions 195x64 cm and 144x96 cm; padding in differentiated density polyurethane foam and non-slip cotton fabric base. Upholstery in leather or fabric, both fully removable by means of zips and Velcro straps.

---

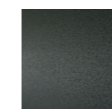
### Top



Canaletto  
Walnut

---

### Feet and Bracket



Steel with  
Gunmetal Grey  
Coating

---

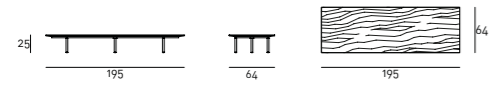
### Note

On request it's possible to order the bench with a bracket-feet made of  $\varnothing$ 25 mm h.21 cm tubular steel painted with gunmetal grey epoxy powders.

Technical Drawings  
Bench with Bracket



Bench with feet



Seat Cushion

