

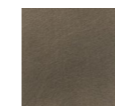


PARALUME

design Piero Lissoni

Lamp with metal base with black epoxy powder coating. Base cover and support with galvanic bronzing, hand-brushed finish with a protecting transparent paint. Lamps are cabled according to European CE laws. Fabric "Plissé", in the colours available in our collection. Floor lamps are delivered in 2 pieces, base to be assembled with support and lampshade.

Base Cover and Support



Steel with
Galvanic
Bronzing Finish

Fabric "Plissé"

White
Ivory
Bordeaux
Brown
Black
Taupe

Technical Drawings

