

EDITOR'S LETTER



Fresh canvas



Newsstand cover

Artwork:
Studio Likeness
Interiors:
Olly Mason

Clockwise from centre, 'Lemni' armchair, from €3,113, by Marco Lavit, for Living Divani. 'Giro' side tables, price on request, by Vincent Van Duysen, for Kettal. Virgil Abloh Wandanlage hi-fi audio wall unit, price on request, by Virgil Abloh, for Braun Audio. 'Divide IT', from €1,377, by Pitsou Kedem, for MDF Italia. 'Pao' lamp, £389, by Naoto Fukasawa, for Hay. See our Design Directory, from page 075, for more

Welcome to our annual Design Directory issue, where we have scoured the globe virtually to bring you the most exciting new design for every room of your home.

Our selection is reassuringly formidable and inspiring, with honourable mentions including: Marco Lavit's geometric 'Lemni' armchair for Living Divani; Tobia Scarpa's 'Soriana' armchair for Cassina; Naoto Fukasawa's 'Pao' table lamp for Hay; Mathias Hahn's 'Akira' bureau for Schönbusch; Vincent Van Duysen's 'Giro' tables for Kettal; USM's timely 'World of Plants' sideboard, an update to its classic 'USM Haller' modular system, enabling you to create a vertical herb garden and naturalise your work space; Stephen Burks' 'Kida' hanging outdoor lounge chair for Dedon; and the 'Wireline' suspension lamp by Wallpaper* Designers of the Year Formafantasma, which creates delightfully sculptural lines out of its requisite power cables.

Meanwhile, our annual Kitchen & Bathroom Digest features Max Lamb's 'Working Tile' coffee table for Tajimi Custom Tiles; Ludovica + Roberto Palomba's 'Sound-Rack' shelving system for Kartell by Laufen; Andrea Parisio and Giuseppe Pezzano's 'Tino' washbasin for Ceramica Cielo; John Pawson's elegantly simple 'JP 37' shower for Cocoon; and the 'Vipp 2' kitchen, in limestone, dark oak and reeded glass.

Elsewhere, we take a tour of architect Manuel Herz's extension for the

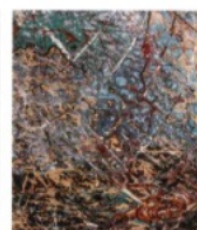
Tambacounda Hospital in rural Senegal, the product of extensive collaboration with the local community and now the subject of an installation at the Venice Architecture Biennale. We preview Michele De Lucchi's first sofa design for Shanghai-based Stellar Works, with an invisible 'floating' inner structure; and discover a photography exhibition curated by Studio Mumbai and David Glaetli, ahead of the 2022 launch of Japanese ceramics brand Mino Soil.

Finally, we are honoured to have Mark Bradford take over our limited-edition cover with his painting *The Price of Disaster*, measuring a monumental 213cm x 274cm (one of our largest cover artworks yet) and evoking cosmic imagery of an expanding universe.

The cover coincides with his major solo exhibition 'Masses and Movements' at Hauser & Wirth's new Menorca arts centre, opening in mid-July. We dispatched art critic Hunter Drohojowska-Philp and photographer Max Farago to Bradford's Los Angeles studio earlier this year to discuss his new body of work, inspired by a 1507 world map that was the first record of the word 'America'. Bringing together abstract expressionist painting and collage, cartographic inspiration and contemporary concerns, these powerful and significant artworks resonate on many levels.

I hope you enjoy the issue!

Sarah Douglas, Editor-in-Chief



Limited-edition cover by Mark Bradford

Bradford's *The Price of Disaster*, 2021, mixed media on canvas, 213cm x 274cm, features sweeping movements of gestural abstraction in various colours swirling around an undefined point near the centre of the canvas. The painting evokes cosmic imagery of an expanding universe or the tearing apart of the space-time continuum at the edge of a black hole.

See our interview with the artist, pictured top with a work-in-progress of his cover artwork, photographed by Max Farago, on page 126

Limited-edition covers are available to subscribers, see wallpaper.com/sub21

Wallpaper*

UK £10.00
US \$16.99
AT €16.00
AUS \$16.99
CDN \$17.99
DKK 129.95
FR €14.50
DE €14.90
ITA €14.50
LUX €14.90
SGP \$28.50
ES €14.00
CHF 18.90
AED 85.00



*Architecture | Design | Art | Travel | Entertaining | Beauty & Grooming | Transport | Technology | Fashion | Watches & Jewellery

JULY 2021

DESIGN DIRECTORY

Forward-facing furniture for 2021



Mark Bradford's epic new show
at Hauser & Wirth Menorca

Studio Mumbai and Mino Soil
get to work with Japanese clay

Sensational kitchens +
breathtaking bathrooms