



View of the living area lit by a large glass wall that offers access to the terrace. Softwall sofas by Piero Lissoni for **Living Divani** and Zoe chair by Lievore Altherr Molina for **Verzelloni**. Right, the entrance corridor organized as a gallery for part of the art collection. Photos Studio Nema.

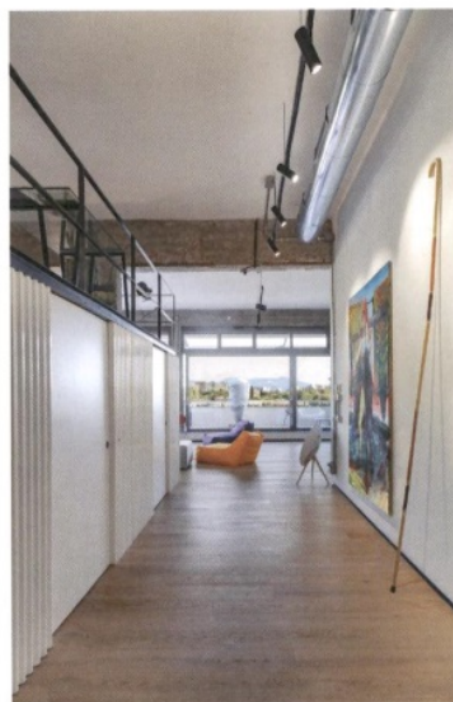
INSide ARCHITECTURE

Project by STUDIO NEMA

CULTURE FACTORY

In a former warehouse in **Rome**, a **loft** conceived as a **residence** and **exhibition space** for a manager with a passion for **art** and **design** combines clean forms and geometric rigor, industrial touches and **furnishings Made in Italy**

photos Omar Golli, courtesy Studio Nema
article Isabella Clara Sciacca





LIGHT & SHADOW STUDY

Per
'INTERNI'

Pitsoa Keeloo
31 March 2020