

[Se non leggi correttamente questo messaggio, clicca qui](#)

LIVING

D I V A N I

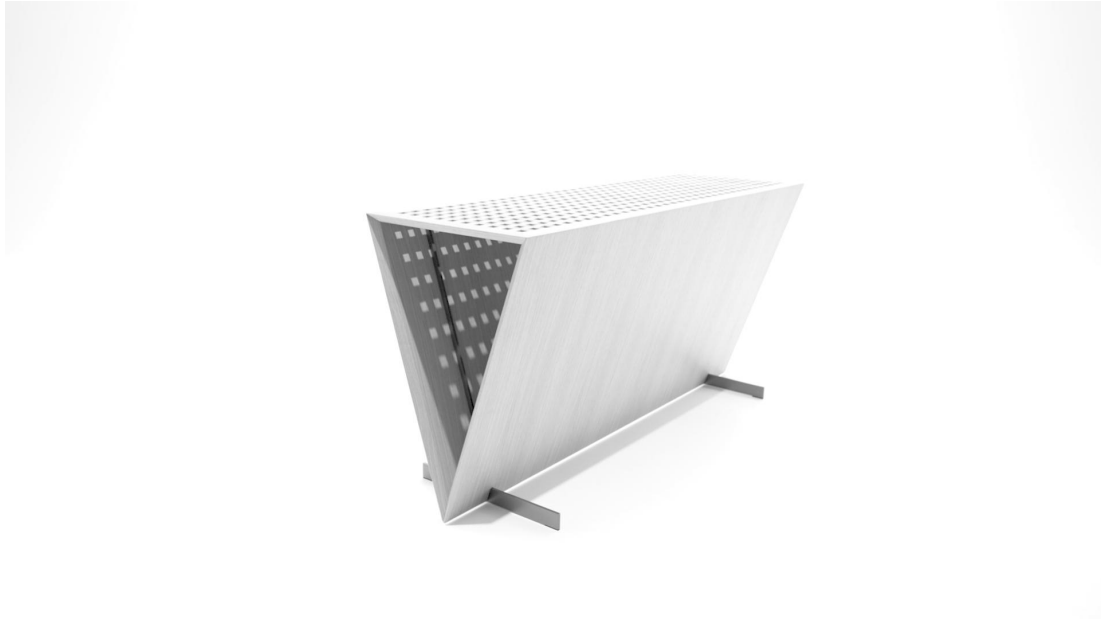
Living Divani, the emotional pills

Chapter 2

Living Divani returns to reveal its collection through emotional metaphorical juxtapositions with nature and the external world.



The **Alvea** console consists of a set of intersecting shapes that frame light with sharp cuts. Modern geometries like sunbeams in the foliage of trees, luminous sections that glide into the structure composing delicate shadows, for a chiaroscuro play visible within the triangular prism. A private secret, jealously guarded in a mysterious treasure chest, a magic box that traps the sun to embrace and perfectly reproduce it. A refuge with a precise and meticulous structure: **Alvea** is modernity, a glance towards the future in the artistic essentiality of form and life.



The **Ark** armchair is the perfect encounter between architecture and design, a eurythmic semicircle, harmonious and balanced as a whole. A vault of a building, the classic, sumptuous and unmistakable style of an elegance without time or place, the historical heritage revisited in a modern and functional key. A cove generated from two contrasting lines, one aimed at giving continuity to the arched design, the other oriented towards the support and comfort of the seat. **Ark** is the element that links curves and squareness, generating coherence and proportion.



The **Railway** storage unit is an element consisting of shelves and uprights that mark time like a clock, a clearly defined rhythm created to depict the perfect parallelism of the individual components. A dynamic surface flows on the train tracks bringing night and day, the open and closed, shortening the distances between the axes and

creating a single, indissoluble entity. **Railway** is the synthesis of essentiality and discretion.



The **Paradigma** mirror is the reflection of the human being, the object that sees its image change and transform over time. A circle, a mirrored reflecting sphere. A stone dropped into the water generates an enchanting circular movement, recalling memories, the past. The uncertain surface fades what it reflects, the memory returns to the life lived showing fragments embedded in tiny dewdrops that, slowly, run along the grassy surface. **Paradigma** is the reflection of human, his image.



The **Clan** sofa is like a nest recalling family and closeness, the open arms waiting to huddle around daily love. The crest of a wave that, having reached its breaking point, turns around, closing in and enveloping itself in a vortex, just before stretching out to

offer itself to the earth. The wave motion of the **Clan** sofa thus envelops souls with its movement, gently caressing and giving them a fragment of inner peace.



The **Sumo Bed** is the perfect refuge to recover harmony and collect thoughts. At dusk, a feeling of softness, featheriness and ardour pervades and welcomes the evening hours. A pure, light aura floats around the **Sumo Bed**. Hovering in the air above it, layers of wind transport it into dreamlike, visionary dimensions, perfectly interpreting the new attitudes and rituals of body and mind.

[Press Kit](#)

Living Divani s.r.l. — [Privacy Policy](#)

